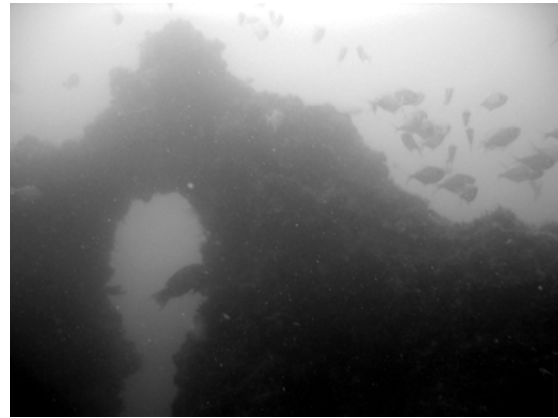


China Wall – Feb 05

John Kelley

We were discussing that, if we were to dive China Wall, east of Moreton Is, it would be nice to see the Keyhole – a large hole in the top of a vertical slice of rock. Well, when we dropped the anchor, if the hole had been on its side we would have had a hole-in-one. The anchor dropped right beside the Keyhole - amazing. Visibility was on the poor side for photography and a wide-angled lens was needed to capture the full effect – I don't have one.



The Keyhole at China Wall

We swam north to the Natural Arch – a large arch a few metres in height. Once again a wide-angled lens was really needed. I was shooting my digital on auto-ISO without the flash and I suspect it was using 400 ISO, the maximum. Even with the fastest speed, the light is so poor that the camera stays open too long resulting in camera shake. In any event at 400 ISO the quality is reduced and the picture shows more “grain” or “noise” in digital terms. However, it's better than nothing and often acceptable.



Kelp

The Northern Arch

Kelp was the main living feature and, unfortunately, no large school of Kingfish screamed by as happened the last time I dived here.