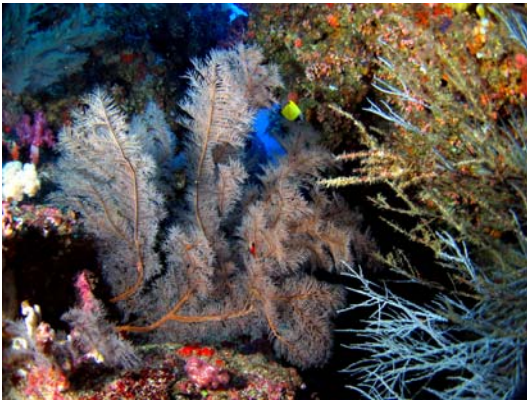


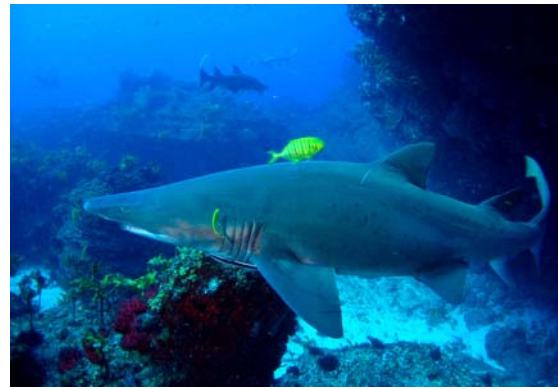
## Cherub's Cave – Club Dive 9 Jul 06

John Kelley

The weather was excellent, the sea calm, the current absent and the visibility outstanding at 15m plus. We managed to plonk the pick on top of Cherub's and, as most divers had not dived this spot before, this was a bonus. The cave entrance, at 27m, was blocked by a school of small fish but the shape of a large grouper loomed behind. It disappeared out of one of the many exits as we entered the shallow cave. The estuary cod remained for a short time and then disappeared. This was not a problem as some divers had already been distracted from the main mission of the cave by the half a dozen Grey Nurse cruising around. We emerged from the cave to watch these quiet submarines cruise effortlessly around and around. One startled me when I took a flash photograph of it and it flicked its tail with an audible crack and speed off a little way. I think the consensus was mostly females and one male. A turtle and a school of Giant Seapike attracted attention away from the sharks for some.



Black coral



A cracking Grey Nurse



Turtle's turn



Giant Seapike

There is a wealth of overhangs and narrow gaps that are filled with bushy black coral and other fans. It's a pretty place and different to its kelped-out cousin, the Keyhole, a few miles south.